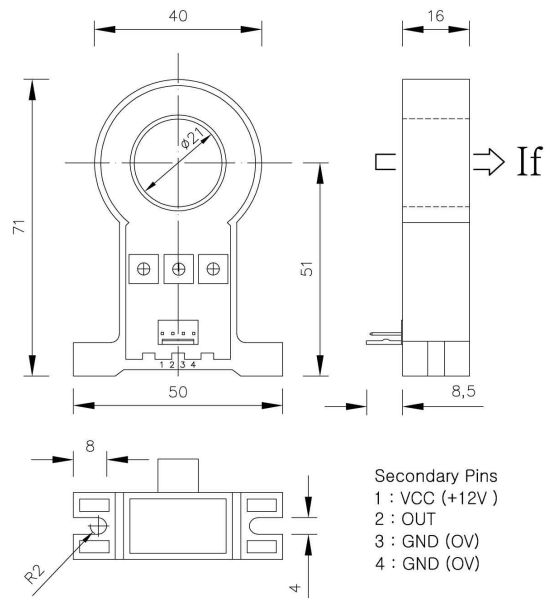


■ PRODUCT CHARACTER



■ DIMENSIONS

TS2-타입 전류스위치 DIMENSIONS(mm)



■ HALL CURRENT SWITCH

[Ta=25℃,RL=10KΩ]

Type-code		TM2W005	-	TM2W100
Parameter	Symbol			
Rated Current (F.S.)	If	5A±5%	-	100A±5%
Output Voltage	Vh	+10V (+11V Max.)		
Supply Voltage	Vc	+12V		
ON Response Time		Within 1msec		
OFF Response Time		Within 7sec±1.5sec		
Dielectric Strength		2.5KV AC with 60Hz × 1minute 관통부 내측-신호핀 간		
Insulation Resistance		500[MΩ]Min. at 500V DC 관통부 내측-신호핀 간		
Operating Temp.	Ta	-10 ~ +80℃		
Storage Temp.	Ts	-25 ~ +85℃		
Note		<p style="text-align: center;"> TM2W PINOUT (1) +V (2) OUT (3) GND (4) GND Connector : Molex 5045-04A </p>		